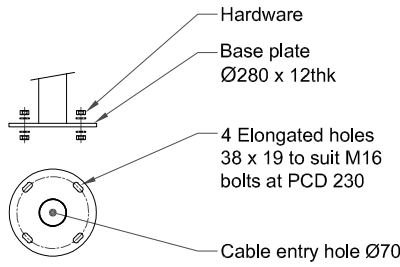
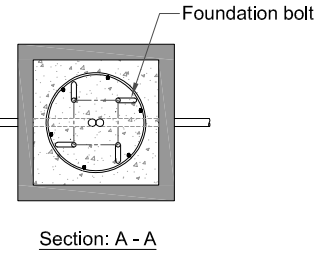
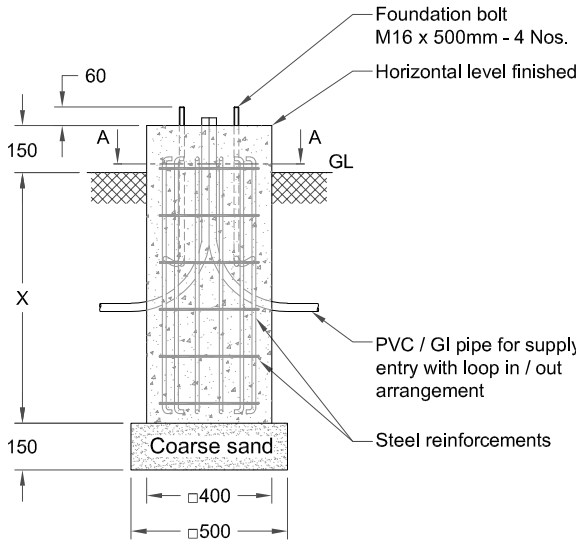


DWG. No. : KP-DFD-132
SHEET No. : 1 of 1

ALL DIMENSIONS ARE IN mm



FOUNDATION TYPE	POLE HEIGHT	DIMENSION " X "
A	5000	800



Note :

1. Typical foundation drawing for standard soil condition.
2. Parameters considered in RCC foundation design :
 Load bearing capacity of soil (LBC) : 10 Mt/m² (Minimum)
 Basic wind speed : 50 m/s
 Grade of steel reinforcement : Fe 415
 Grade of foundation bolt : 4.6
3. Height of foundation above ground level (150mm) may be revised to suit the site conditions especially considering the expected water level stagnation.
4. Template supplied is suggested to be used for locating the PCD of foundation bolts.
5. 4 Nos. of foundation bolt have to be oriented (located), while casting the foundation such that the door of the electrical junction box faces the required direction.
6. PVC / GI pipe for entry of supply cable and the materials required for foundation are not scope of our supply.

REV. No.	REVISION DETAILS	DATE	REVISED	CHD	APPD

DRAWN R.SATHISH	CHECKED	APPROVED	DATE 18-01-2021	SCALE 1 : 25	MATERIAL -	Z:\KP005.FOUNDATION DETAILS\KP - DFD - 132 (KP-95)\REV 00.dwg				
						DETAILED FOUNDATION DRAWING FOR KP - 95 Ø280 x 12 (FOUNDATION BOLT M16 x 500)				
							DRG. NO. KP-DFD-132	REV 00	SHEET 1 of 1	