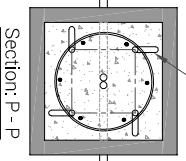
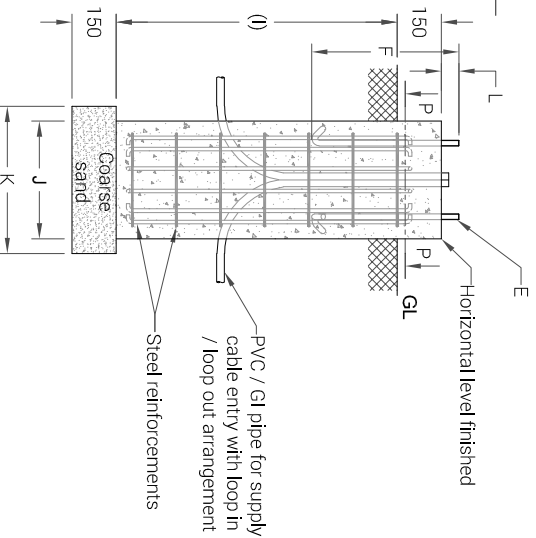
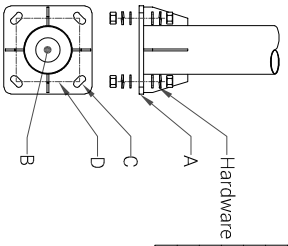


K - LITE STANDARD (S1) POLE FOUNDATION DETAILS

Figure	Pole height	Base plate (A)	Cable entry Hole(B)	No. of holes/ bolts (C)	CC (D)	Foundation bolt projection height (L)	Bolt (E)	Length (F)	RCC Height below GL / Digging depth (I)	Length of RCC layer (J)	Length of coarse sand layer (K)
KP-72.1	4000	□200 x 12hk	Ø70	4	140	75	M16	300	600	□400	□500
KP-72.2	5000	□250 x 12hk	Ø70	4	180	75	M16	500	800	□400	□500
KP-72.3	6000	□250 x 12hk	Ø70	4	180	75	M16	500	1000	□400	□500
KP-72.4	7000	□300 x 16hk	Ø70	4	215	90	M20	500	1000	□400	□500
KP-72.5	8000	□300 x 16hk	Ø70	4	215	90	M20	500	1200	□400	□500
KP-72.6	9000	□300 x 16hk	Ø70	4	215	90	M20	500	1200	□500	□600

Note:

1. Typical foundation drawing. Contact local site engineer for detailed drawing.
2. Parameters considered in RCC foundation design :  
Load bearing capacity of soil (LBC) : 10 Mt/m<sup>2</sup> (Minimum)  
Grade of steel reinforcement : Fe 415  
Grade of foundation bolt : 4.6
3. Height of foundation above ground level (150mm) may be revised to suit the site conditions especially considering the expected water level stagnation.
4. Template supplied is suggested to be used for locating the CC of foundation bolts.
5. 4 Nos. of foundation bolts have to be oriented (located) while casting the foundation such that the door of the electrical junction box faces the required direction.
6. PVC / GI pipe for entry of supply cable and the materials required for foundation are not scope of our supply.

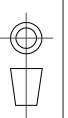


REV. No.	REVISION DETAILS	DATE	REVISED	CHD	APPD
02.	Design revised	12-12-24	SANKAR		
01.	10m, 11m & 12m POLE HEIGHT REMOVED	06-07-2021	R.SATHISH		

DRAWN	CHECKED	APPROVED	DATE	SCALE	MATERIAL	Y:\K\005.FOUNDATION DETAIL SIKP-D-112 (KP-72)\KP-DFD-112 (KP-72), REV 02.DWG
THIRUPATHI			12-06-19	1 : 45	-	

**K-LITE**  
PRIVATE LIMITED  
CHENNAI-600 058

DETAILED FOUNDATION DRAWING FOR KP - 72  
SURFACE MOUNTED POLE



DRG. NO.  
KP-DFD-112

REV 02  
SHEET 1 of 1