

lighting today

Volume 4 | October - December 2023

Courtyard by Marriott Tiruchirapalli
This project showcases lighting in
hospitality sector. **p16**





ON THE COVER:
Courtyard by Marriott Tiruchirapalli
Photograph: Yatinder Kumar

Dear Readers,

Hello and welcome back to the last issue of 2023. In this issue, we look at the different lighting solutions installed in hospitality projects. Hotels are iconic landmarks in many cities and their success is sometimes due to their facade lighting. Facade lighting makes the hotels recognisable from far and gives them a distinct identity. In interiors, lighting can make an occupant's stay in the hotel comfortable and also provides a safe environment for them. Check out the hotel lighting projects inside. In Trends, we feature two projects on Solar Street Lighting and their positive impact on the residents and public. Also, don't forget to read the news and product showcase sections for the latest industry developments. Enjoy the issue! If you have any comments or feedback, feel free to drop me an email at lighting@tradelinkmedia.com.sg. Take care and we will be back with the 2024 issues of Lighting Today.

Editor

Amita Natverlal

Industry Partners of Lighting Today



National Lighting Bureau

VOL 1 / 2024 TOPICS

- **Features:** Lighting in Urban Parks
- **Trends:** Sustainable Lighting
- **Spotlight:** Exclusive Lighting Designer Interview
- **Lighting Product Showcase:** Smart Lighting, Outdoor Lighting, Indoor Lighting, LED Lighting, Lamps / LED, Ballast / Transformers, Lighting Controls, Emergency / Exit

ASSOCIATE PUBLISHER

Eric Ooi

eric.ooi@tradelinkmedia.com.sg

EDITOR

Amita Natverlal

lighting@tradelinkmedia.com.sg

MARKETING MANAGER

Felix Ooi

felix.ooi@tradelinkmedia.com.sg

HEAD OF GRAPHIC DEPARTMENT/ ADVERTISEMENT COORDINATOR

Fawzeeah Yamin

fawzeeah@tradelinkmedia.com.sg

CIRCULATIONS EXECUTIVE

Yvonne Ooi

yvonne.ooi@tradelinkmedia.com.sg

LIGHTING TODAY IS PUBLISHED BY

TRADE LINK MEDIA PTE LTD

1 Paya Lebar Link
#04-01 Paya Lebar Quarter 1 (PLQ 1)
Singapore 408533

For interest in advertising and advertorials, please attention your query via:
direct call: +65 6842 2580

ISSN 2345-7147 (Print) and
ISSN 2345-7155 (E-periodical)

This publication is published four times a year and available on the digital platform.

To download a free digital copy, visit lt.tradelinkmedia.biz.

Other Titles by Trade Link Media Pte Ltd:

Bathroom + Kitchen Today
Southeast Asia Building
Southeast Asia Construction
Security Solutions Today

DISCLAIMER

All advertisers and contributors must ensure all promotional material and editorial information submitted for all our publications, must be free from any infringement on patent rights, copyrights laws in every jurisdiction. Failure of which, they must be fully liable and accountable for legal consequences (if any) that may arise.

The editor reserves all right to omit, amend or alter press releases submitted for publication. The publisher and editor are unable to accept any liability for errors or omissions that may occur in this process, although every effort has been taken to ensure that all information is correct at the time of going to press. Edited articles or stories are returned to contributors for check on facts at the sole discretion of the editor. No portion of this publication may be reproduced in whole or part without written permission of the publisher. The editor reserves all rights to exclude or refuse submissions at any time without prior written or verbal notice if contributing parties do not provide complete text and supporting images at a minimum of 300dpi in .jpeg and .tiff format.



Facade of Courtyard by Marriott Tiruchirapalli.



Courtyard by Marriott Tiruchirapalli

- A fine blend of tradition and modernity

Tamil Nadu, India

PROJECT NAME

Courtyard by Marriott Tiruchirapalli

PROJECT LOCATION

Tamil Nadu, India

CLIENT

Sangam Hotels

ARCHITECTURE

VKTs

INTERIOR DESIGN

TID

PROJECT MANAGEMENT

Krishnaswamy

LIGHTING DESIGN

Lighting Research & Design

LUMINAIRE SUPPLY

Anura; Equinox Lighting; Gojis Lifestyle

LUMINAIRE BRANDS

Hybec; K-Lite; Ledos

PHOTOGRAPHS

Yatinder Kumar



Lobby



Trichy Kitchen



Vasantham Banquet Hall

Tiruchirappalli is the fourth largest city in Tamil Nadu, situated on the banks of the river Cauvery. It is a fine blend of tradition and modernity built around the Rock Fort, a citadel of the early Cholas which later fell to the Pallavas. The Rockfort Temple, a spectacular monument perched on a massive rocky outcrop which rises abruptly from the plain to tower over the old city is the most famous landmark of this bustling town. The Sri Ranganathaswamy Temple built on an island in the middle of Cauvery River is another landmark in its vicinity renowned for being one of the largest and most interesting temple complexes in India. Given the overpowering context of the Rockfort and Srirangam temples, the contemporary design of the recently renovated Courtyard by Marriott at Tiruchirappalli had to reflect a storyline of architectural elements derived from these temples. The storyline is continued throughout the hotel by layering and repeating the patterns such as rectilinear patterns to create an impactful illusion.



Ninvantham Banquet Hall



Nanjai Banquet Hall

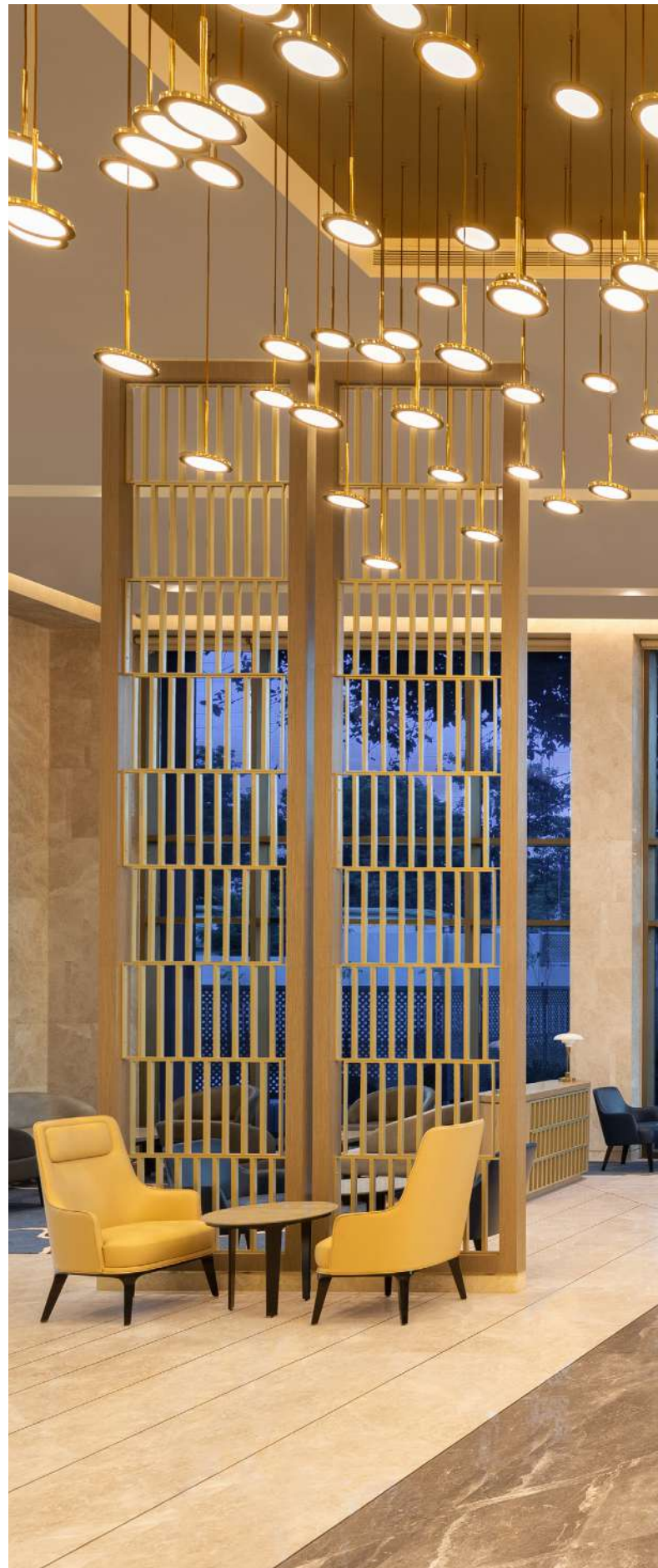
The architecture firm VKTs in collaboration with the interior design firm TID created the final design for the hotel. Lighting Research & Design was onboarded for the lighting, given the client's previous experience on working with the same team. The renovation of the hotel's exterior demanded a graceful facade illumination that would complement the hotel's own history. The facade consists of two angularly juxtaposed building blocks: the main block containing the main entrance and lobby, and the secondary block entirely populated with guestroom windows and other balconies. The dimensions of the building are modest: it does not exceed 2-storeys in height for the main block and two more for the secondary block. The building façade facing the main road were naturally illuminated with windows and required minimal external treatment such as the narrow bands below windows that were illuminated by sleek linear grazers (Ledos).

The Gopuram (tower) of Srirangam temple became the inspiration for the design of the reception back drop at the lobby using a very colourful interpretation within a certain palette. The rest of the backdrop is kept light and in one tone of wood in order for the gopuram design to stand out. The entire backdrop wall is illuminated using special linear power grazer luminaires (K-Lite). The lobby centrepiece consists of a custom-designed decorative chandelier (Equinox), which is an interpretation of an inverted gopuram. The T Lounge (Lobby lounge) continues the earthy tones of the Courtyard Marriott brand palette involving rich marble flooring with grid line patterns inspired by the Temple architecture. Adjustable pull-out spotlights (K-Lite) neatly concealed within ceiling slots illuminate the lounge area.

The All Day Dining known as Trichy Kitchen comprises a storyline of architectural elements that form a pattern above the buffet counter as a design feature. Printed tiles form a highlight for the island buffet and rest of the flooring consists of homogeneous cement tiles and Italian marble. Indirect lighting using coves is the primary source of illumination supplemented by decorative pendants with LED filament lamps that provide a retro look. Magnetic track-mounted mini-spotlights (Hybec) illuminate the food items in the buffet counters.

The hotels boasts of several banquet halls and meeting rooms of various sizes, as well as large pre-function halls. Each hall has a unique bold carpet bringing out the colour in the space. Walls have been kept neutral to act as a backdrop for the functions own colour. The Banquet Hall Pre-function flooring has interspersed grid lines, with brass inlay continued from the lobby patterns and artwork on the walls to add colour to the earthy combination of marble and wallpaper on walls. The artwork on the walls are illuminated with the same linear power grazer luminaires used in the lobby. Focus is on the use of diffuse and indirect lighting in the form of custom linear profiles and cove lighting respectively, as much as possible. The Vasantham Banquet Hall is well known in the city and hosts many conferences and weddings. The elaborate chandelier (Equinox) made of glass and metal is its main focal point. The other smaller halls namely Nanjai and Ninvantham are all illuminated with a combination of indirect lighting using cove lights and direct lighting using the adjustable pull-out spotlights.

Simple yet stylised lighting is used throughout the hotel right from the façade to all its interiors so as to provide a unified look of tradition and modernity.





T Lounge