

Elegant lighting design, which is suitable for both modern and classic architecture. Ideal for creating visual guidance and exceptional visual comfort. These luminaires offer shielded glare free illumination of ground surface and are perfect for illuminating entrances, footpaths as well as garden and landscape architecture. Bollard luminaires contribute to safety by illuminating pathways and other open spaces.

### Product Description

- Luminaire made of extruded aluminium alloy (grade 6063) with die-cast aluminium components and non corrosive SS fasteners.
- Clear toughened glass.
- Luminaire can be aligned on the mounting plate around 360°.
- Mounting plate die cast aluminium double powder coat with an anchorage unit and stainless steel fixing screws.
- Cable entries for through-wiring of mains supply cable
- Integral constant current power supply
- CRI ( Ra ) :  $\geq 80$
- Prewired with LED driver and suitable for operating on 240V, 50Hz single phase ac supply.
- Ordering guide : KL-4709-CCT (Colour Temperature)
- Available CCT : 2700K, 3000K, 4000K, 6500K



### Product Benefits

- High luminous efficiency at reduced wattage.
- Elegant, Robust design
- Corrosion resistant and Maintenance free.
- Dark sky compliant protects pedestrians from glare, in addition to preventing spill light above the horizontal plane.
- Sustainable LED technology offers durability and optimal light output with low power consumption.

### Area of Application

Suitable for medium / high public areas.

### Available Finish

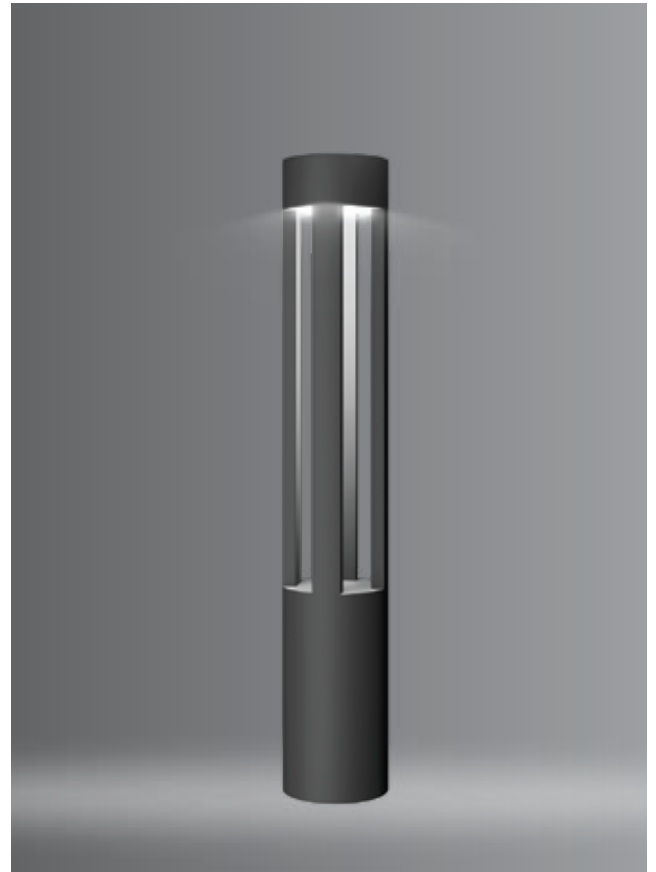
Pure polyester powder coated

RAL 9004 Signal black

RAL 9007 Grey aluminium

RAL 7016 Anthracite grey

Graphite grey





MAKATAB PROJECT, UAE

**Technical Specifications**

**General**

ID : 4709  
 System Wattage : 12W LED  
 Driver Integral : Constant Current  
 Operating Voltage : 100-277Vac  
 Operating Temperature : -15°C~+50°C

**Light Source**

Light Source : CITIZEN  
 CRI (Ra) : >80  
 LED Colour Temperature : 2700K / 3000K / 4000K / 6500K

**Physical**

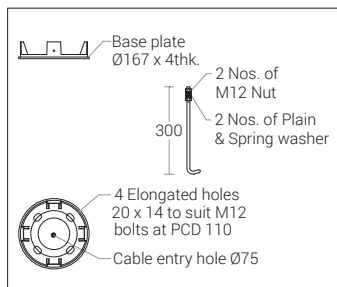
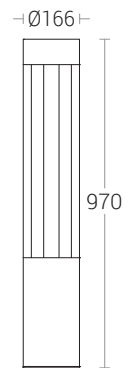
Body : Extruded Aluminium with Die-Cast Aluminium  
 Diffuser : Clear Toughened Glass  
 Mounting : Surface - Floor  
 Finish : Powder coated  
 RAL 9004 Signal black  
 RAL 9007 Grey aluminium  
 RAL 7016 Anthracite grey  
 Graphite grey

**Driver**

Power Supply : Integral  
 Input Voltage : 230-240Vac  
 Frequency : 50-60 Hz  
 Power Factor : >0.9  
 THD : <10%  
 Surge Protection : 2.5KV  
 Efficiency : >85%

**Optical Performance**

Light Distribution : Symmetrical



**Note :** It is our constant endeavor to upgrade the performance of our products. For the latest technical information, IES files and product updates please refer to the website at [www.klite.in](http://www.klite.in)